

EPD International AB

# EPD Quality Process



## Susanne Lundberg

Manager Compliance & Quality Assurance  
EPD International AB

Susanne.Lundberg@environdec.com  
+46 (0)10-788 65 32

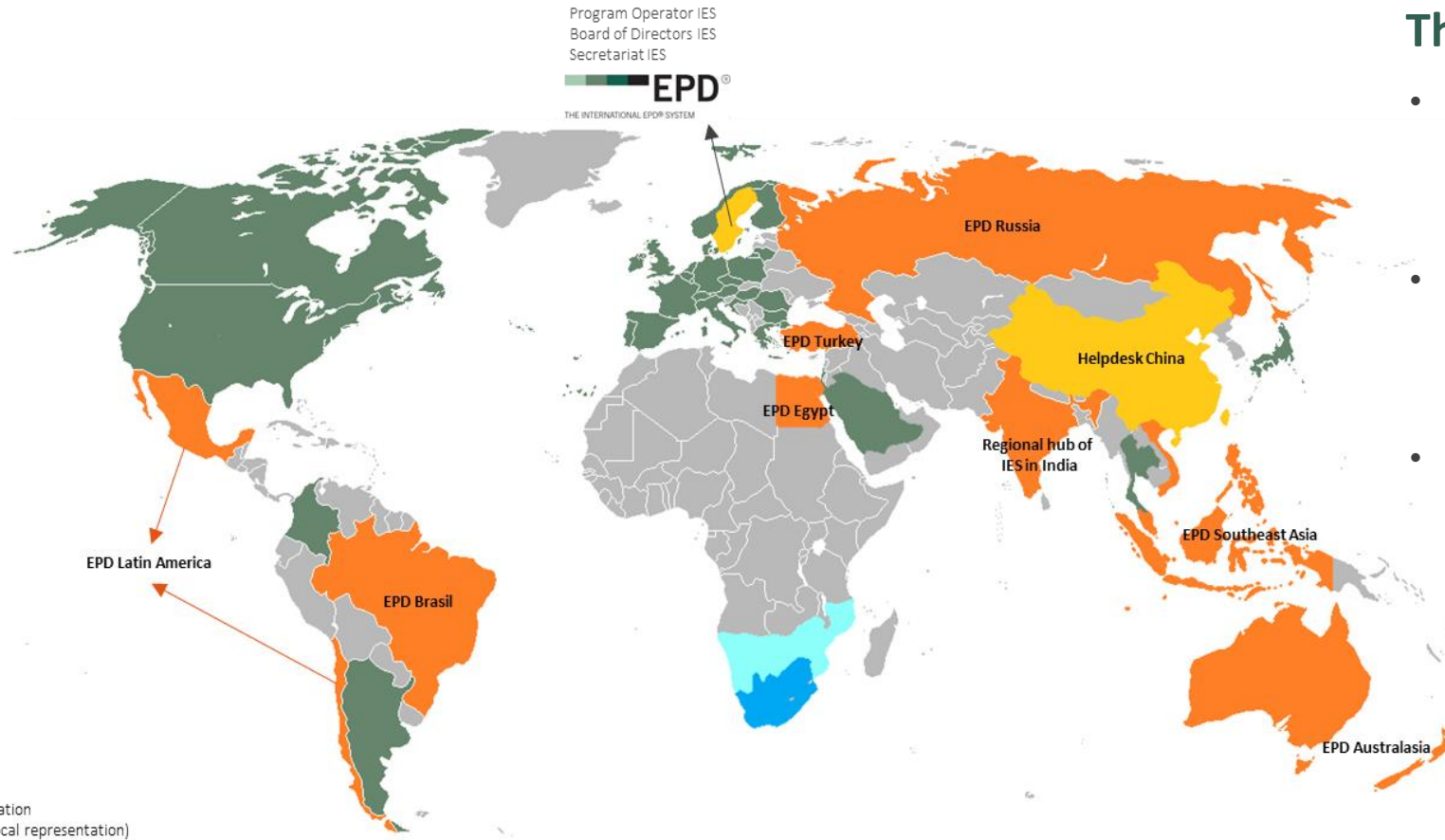
**EPD International AB**  
www.environdec.com

## The International EPD System

- Worldwide first EPD programme founded in 1997; jointly owned by Swedish Environmental Protection Agency & Industry.
- EPD Intl. offers registration and publication services for **Environmental Product Declarations (EPD)** according ISO 14025 & EN 15804.
- In 2014, EPD programme ownership transferred to EPD International AB, a fully-owned subsidiary to [IVL Swedish Environmental Research Institute \(IVL\)](#).

## EPD Network -

A global EPD programme with dedicated national licensees and helpdesk



**Legend**  
 Orange: International hub  
 Yellow: EPD Intl. and Helpdesk  
 Blue(s): International hub in preparation  
 Green: Registered EPDs (without local representation)

## The International EPD System

- Worldwide first EPD programme founded in 1997; jointly owned by Swedish Environmental Protection Agency & Industry.
- EPD Intl. offers registration and publication services for **Environmental Product Declarations (EPD)** according ISO 14025 & EN 15804.
- In 2014, EPD programme ownership transferred to EPD International AB, a fully-owned subsidiary to [IVL Swedish Environmental Research Institute \(IVL\)](#).

## Definitions -

### Environmental Product Declaration and Product Category Rules



#### Environmental Product Declaration (EPD)

An EPD transparently communicates ***third-party verified, objective*** and ***comparable*** information about the life-cycle environmental performance of products and services.

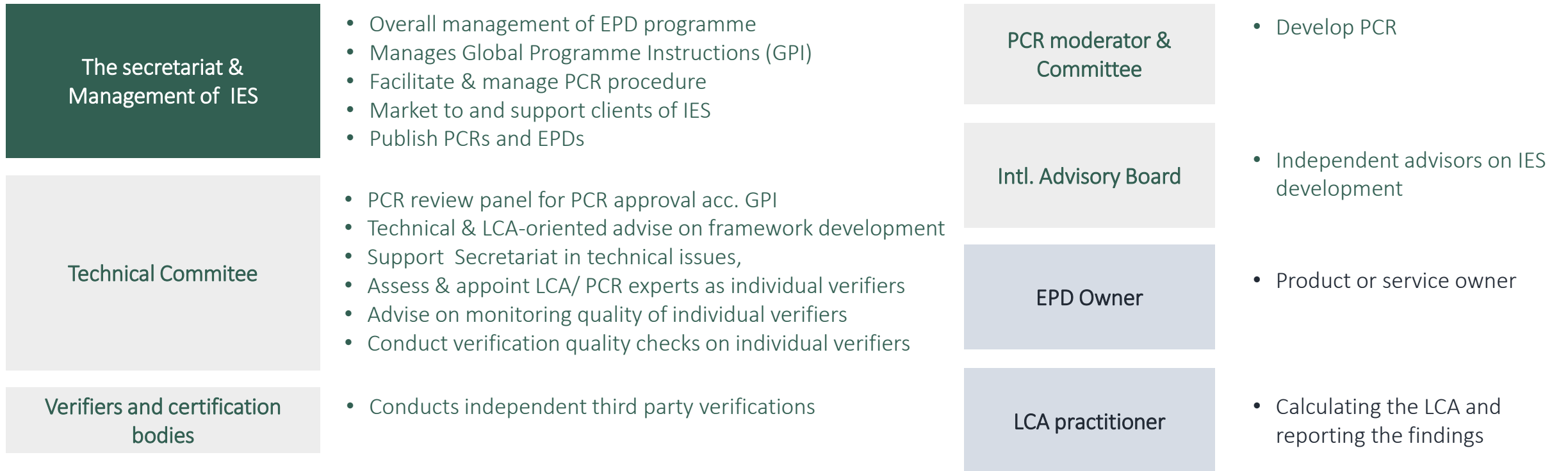


#### Product Category Rule (PCR)

A PCR provides ***rules, requirements,*** and ***guidelines*** for developing an EPD for a specific product category.

# Environmental Product Declaration -

7 stakeholders are involved in the EPD development process



*The International EPD System*



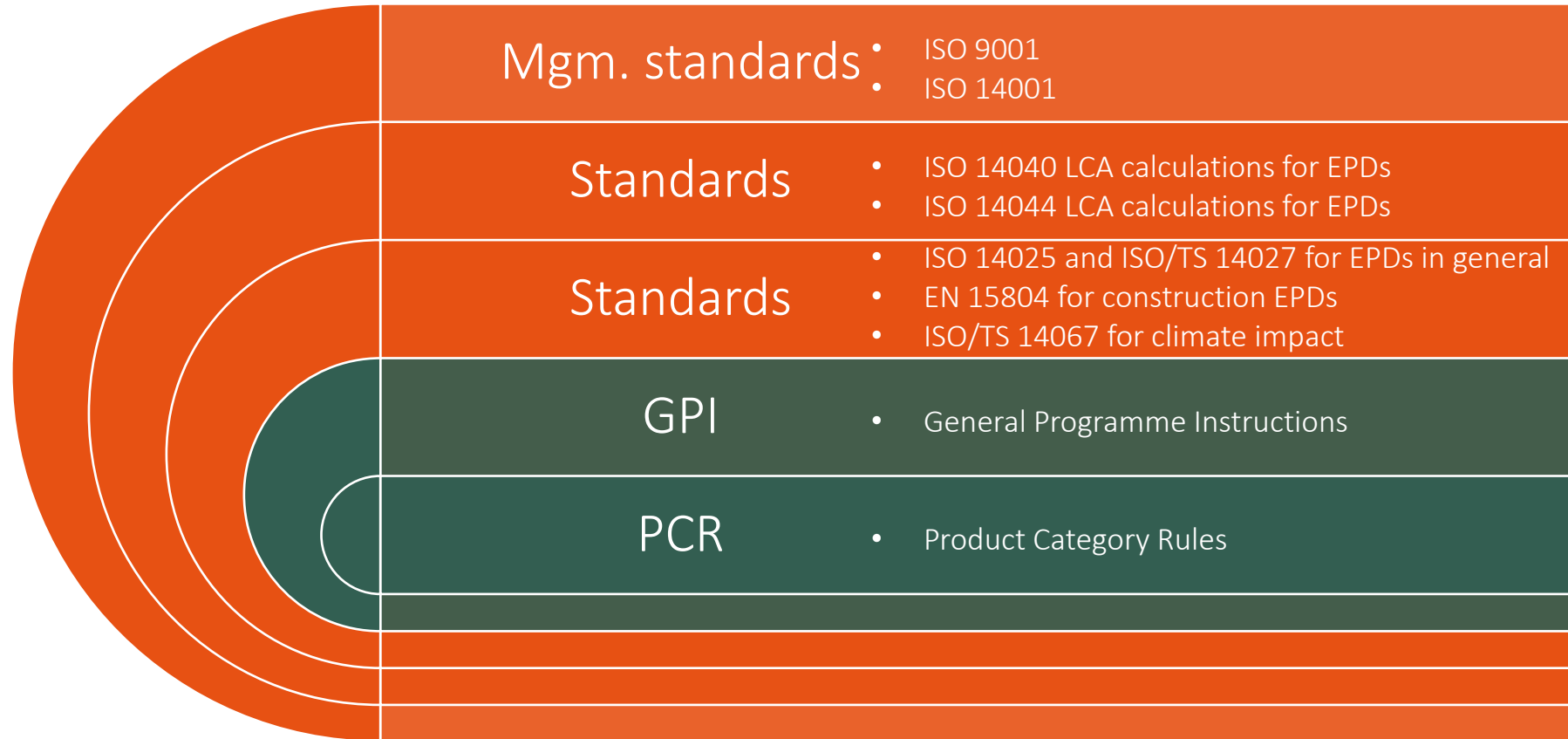
*Stakeholder connected to IES*



*Stakeholder indirectly connected to IES*

## EPD International -

The management framework is built on international LCA and management standards in addition to two self developed steering documents



*Developed in IES, on-going updates*



*International Standards, relatively static*

## EPD International -

Is involved in two international collaboration networks



- European collaboration platform for programme operators for EPD of construction products, i.e. EN15804.
- EPD International is one of founding members and approved to issue EPDs with "ECO EPD logotype"

### Activities:

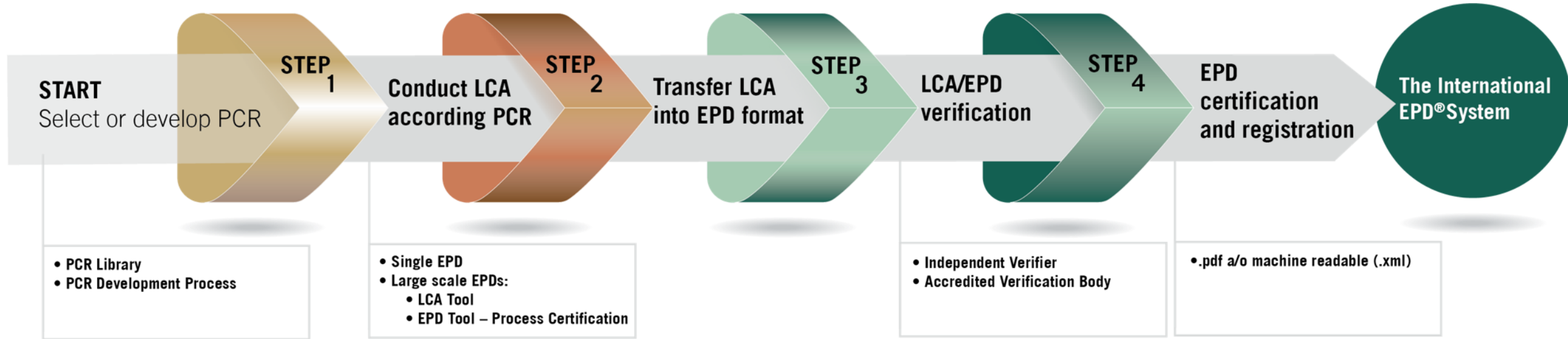
- Quality assurance of verification process
- Common understanding of methodology standards
- Harmonization of PCR



- Informal, non-profit working group of interested stakeholders led by the BBSR.
- Main objective is to establish an international network structure for EPD/LCA data in the construction sector.
- Using a common data format in an open network structure to allow open access to data and flexible application options, while maintaining individual ownership and responsibility for the data.
- Online based and using open source software.

## EPD International -

The EPD development process is divided into four steps





## PCR Development Process -

we quality control our PCR:s by involving many stakeholders in the development process

**START**  
Select or develop PCR

**STEP 1**

- PCR Library
- PCR Development Process



PCR moderator

- Leads and coordinates the development work
- Required knowledge within the field and excellent project management skills
- LCA expertise is highly appreciated



PCR Review Panel

- Independent
- LCA and EPD expertise and in-depth knowledge in the General Programme Instructions
- Reviews and approves each PCR before publication



PCR Committee

- Participate in the PCR development process
- Should be balanced and include many interested parties such as manufacturer, financial sector, sustainability/LCA experts, non governmental organisations, authorities etc.
- Shall have competence in LCA, key processes of the product life cycle



EPD secretariat

- Administers and quality control the PCR development process.
- Connect PCR moderator and Technical Committee
- Manage the independent review by the PCR Review Panel
- Responsible for publishing the PCR on our website
- Responsible for the maintenance, updates and validity of the PCR

*A PCR describes how the LCA shall be constructed and reported, to ensure comparable results*

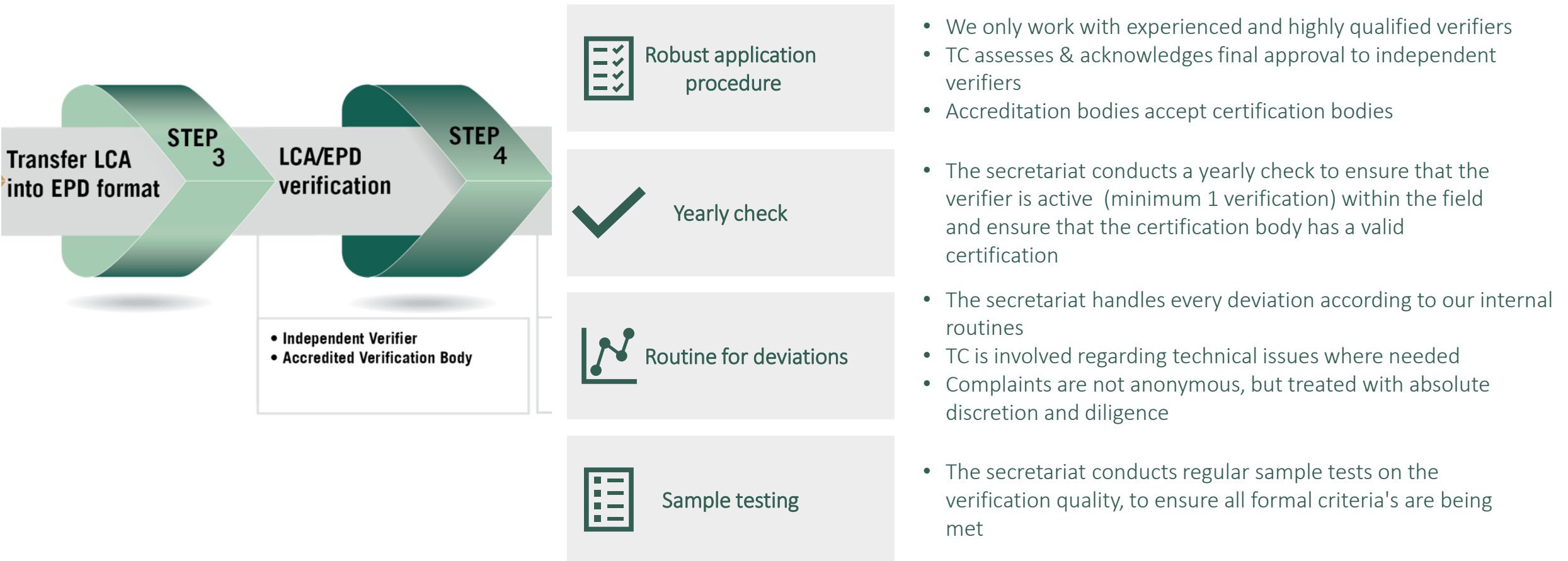
## EPD Development Process -

we quality control the LCA calculations by, for example, demanding the LCA practitioner to following the requirements described in our GPI and PCR



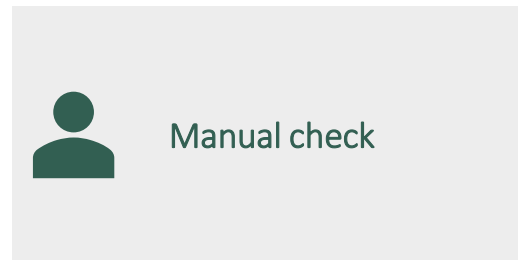
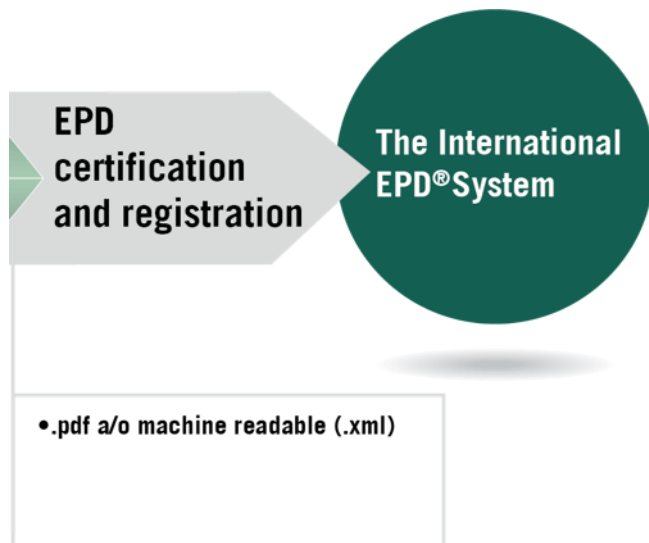
## EPD Development Process -

we secure good LCA quality by, for example, demanding a verification by independent verifiers or certification bodies and sample tests the verifications

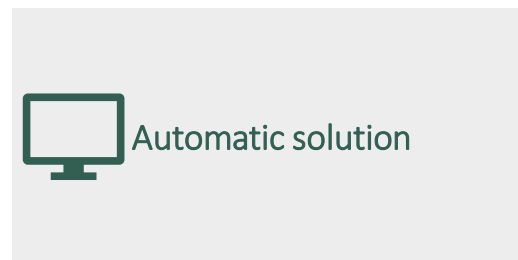


## EPD Development Process -

we quality control EPD:s that being published by applying manual checks and automatic solutions



- A member from our EPD secretariat is going through the EPD manually to ensure mandatory requirements are being met



- Digital transferring of information minimizes the risk of errors from manual handling.
- Additional possibilities of greater quality checks of the LCA result, for example by evaluating the LCA result in a product category based on statistics.

The background of the slide is a blurred photograph of a group of people in an office or meeting room, creating a professional and collaborative atmosphere.

# Thanks for listening!

[www.environdec.com](http://www.environdec.com)

[Susanne.Lundberg@environdec.com](mailto:Susanne.Lundberg@environdec.com)