



RÉPUBLIQUE
FRANÇAISE

*Liberté
Égalité
Fraternité*



ADEME vision on LCI DBs for years to come

Swiss LCA Discussion Forum – 21.09.2023

Where do we come from? (2005-2023)

- **GHG Organization Footprint** (mandatory, French law):

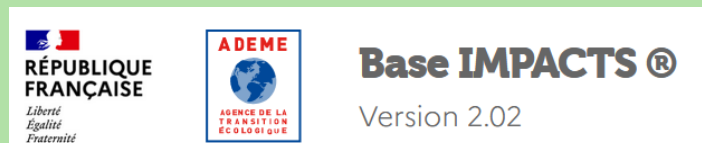


~70.000
users

GHG results mainly coming from: LCA studies, Base Impacts, Sectorial DBs (AGB...)

No consistency, fully agg, but easy contribution

- **Product Env footprint (voluntary):**



for apparel
& furniture

~40.000
users

LCIA results mainly come from Gabi & cofunded sectorial projects (AGB...)

ILCD/EF format, quite good consistency, fully agg, uneasy contribution

- **Eco-design** simplified tool: Bilan Produit → based on Base Impacts

*Low-cost but
many defaults*

6 sectorial projects (on agriculture, textile, WEEE, plastics recycling...), one remains active:



Simapro library, disaggregated but not connected to Base Impacts background

Where do we want to go? (>2025)

- **One common platform for all purposes:**

- GHG Organisation Footprint (mandatory)
- Product Environmental Footprint (still voluntary?)
- Eco-design, 1st approach
- « Empreinte Projet »: ecodesign of projects for ADEME call for projects

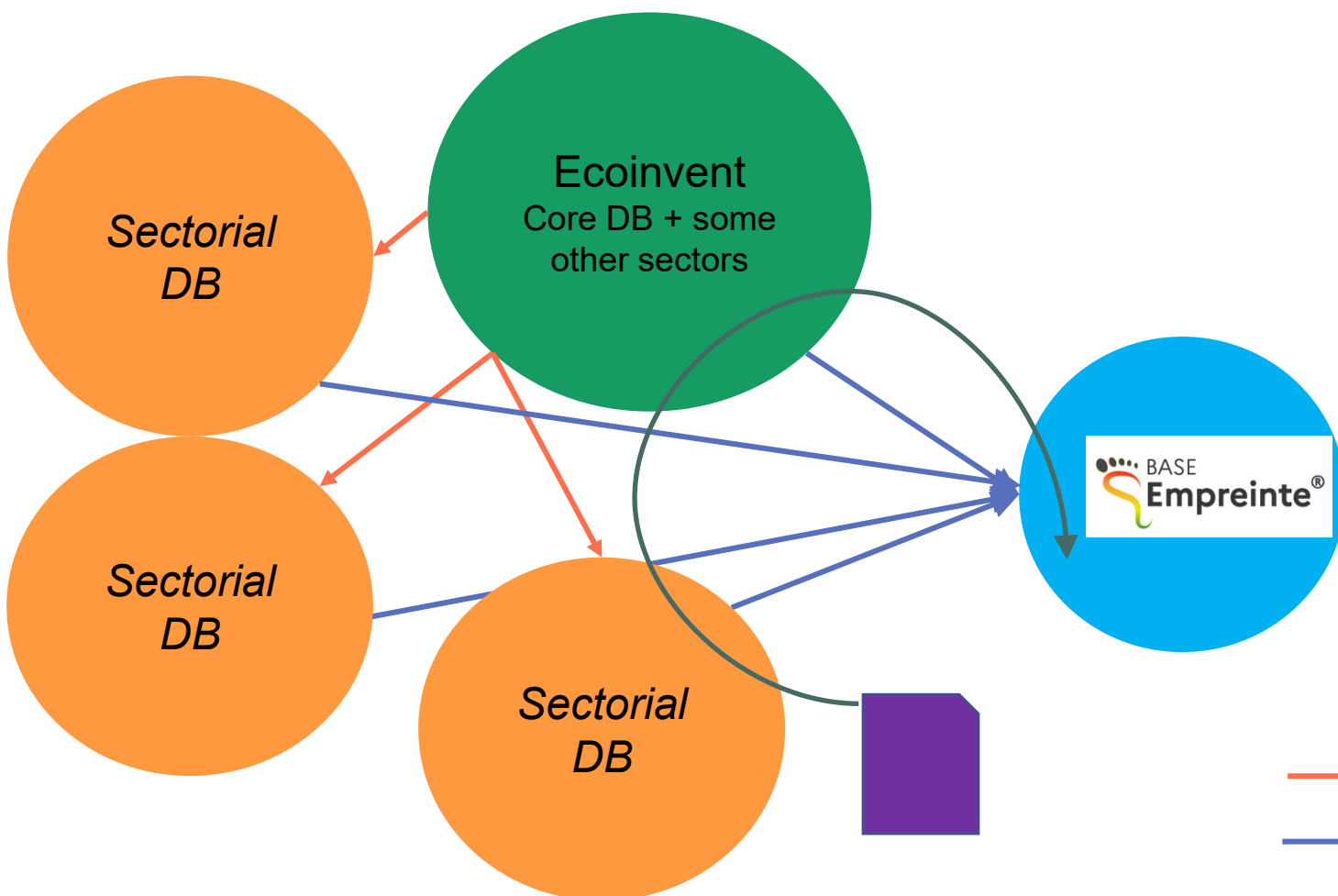


~around 100.000
users expected
(companies, cities &
regions, teachers...)

- Heterogeneous methodological backgrounds will lead to variants, with goal to minimize them.

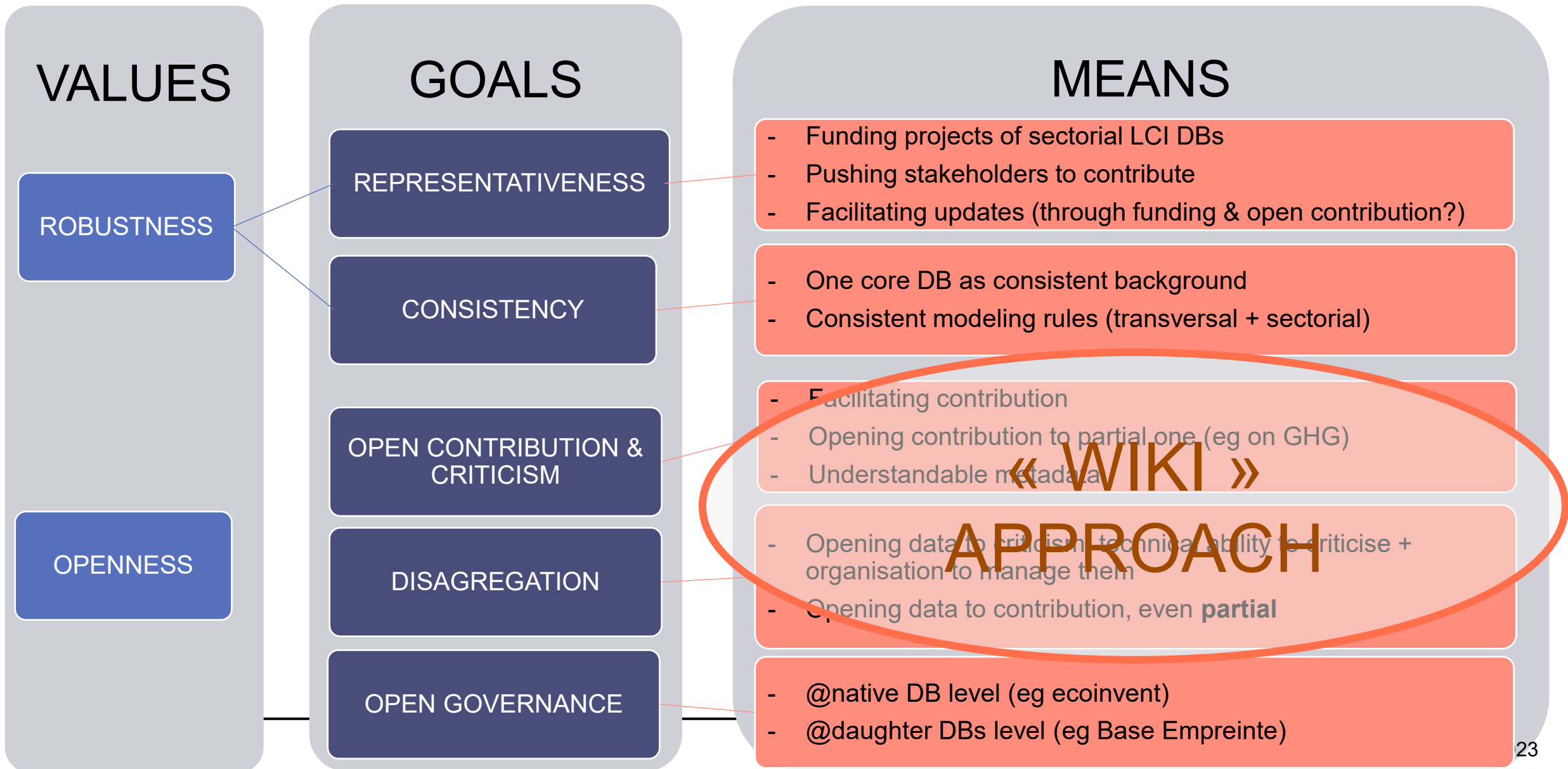
How would Base Empreinte future ecosystem look like

1. Ecoinvent as main supplier and Core DB
2. Sectorial DBs using ei as background
3. Contributions managed through proper channel (1 or 2) to guarantee consistency



- Links between DBs for consistency
- Sources to feed Base Empreinte

How do we want to go there?



1st challenge: the legal framework

Previous situation:

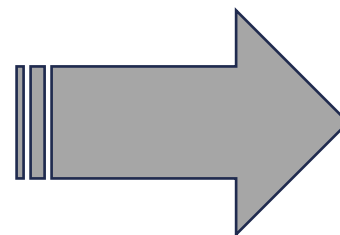


Base IMPACTS®

Version 2.02

- Both DBs made of LCI data: enough for the targeted applications
- As there is concurrency between ei & Gabi → as a public body, need to go for Call for tenders
- consequences: every 4 years, need to start from scratch → discontinuity

NB: Similar approach for EF db (1st call for tender was copy-pasted)



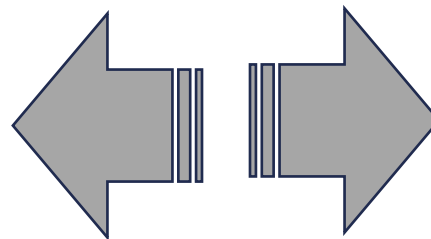
- DB made of LCI & p-agg data
- But requesting a UP version elsewhere: making ei as a central partner
→ Need to find the legal basis for such a partnership

2nd & 3rd challenges: technical and organisational



- open governance, including ei
- funding ei towards “wiki” tools

PARTNERSHIP



ecoinvent

- taking part to Base Empreinte governance
- opening its own governance to other stakeholders

- improving & developing new tools towards “wiki” approach (e.g. eco-editor)



RÉPUBLIQUE FRANÇAISE

*Liberté
Égalité
Fraternité*



Merci

Reaching us:

olivier.rethore@ademe.fr

base-empreinte@ademe.fr